

COURTYARD STUDIOS



RENT *GRANVILLE*.COM

Contact:

Danielle Falaschi

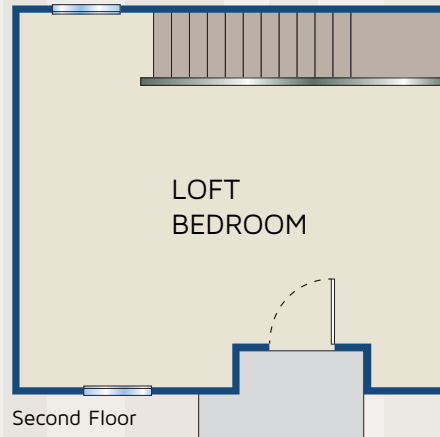
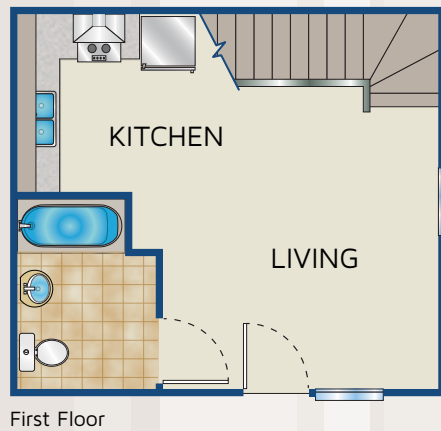
559.486.3000

dfalaschi@gvhomes.com

COURTYARD STUDIOS

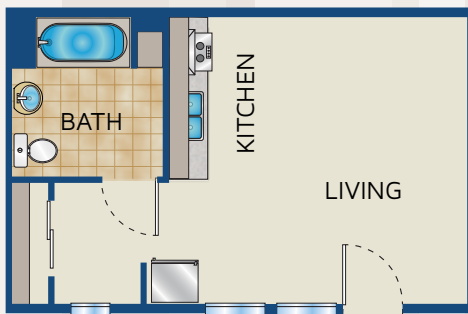
Courtyard Studios, centrally located in the Mural District of downtown Fresno. These chic and modern studios and studio lofts offer the perfect combination of the urban living lifestyle. Just steps away from all of the downtown night life and theatre entertainment.

These studios will range from 338 to 730 square feet and they include many contemporary amenities, such as granite counters and energy-efficient appliances. And all within a private gated community, known as the Courtyard Studios.



PLAN A

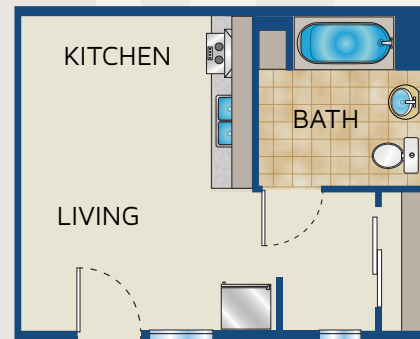
730 Sq. Ft. - #101, #102



PLAN B

392 Sq. Ft. - #203, #204, #205, #103, #104, #105, #106

432 Sq. Ft. - #206*



PLAN C

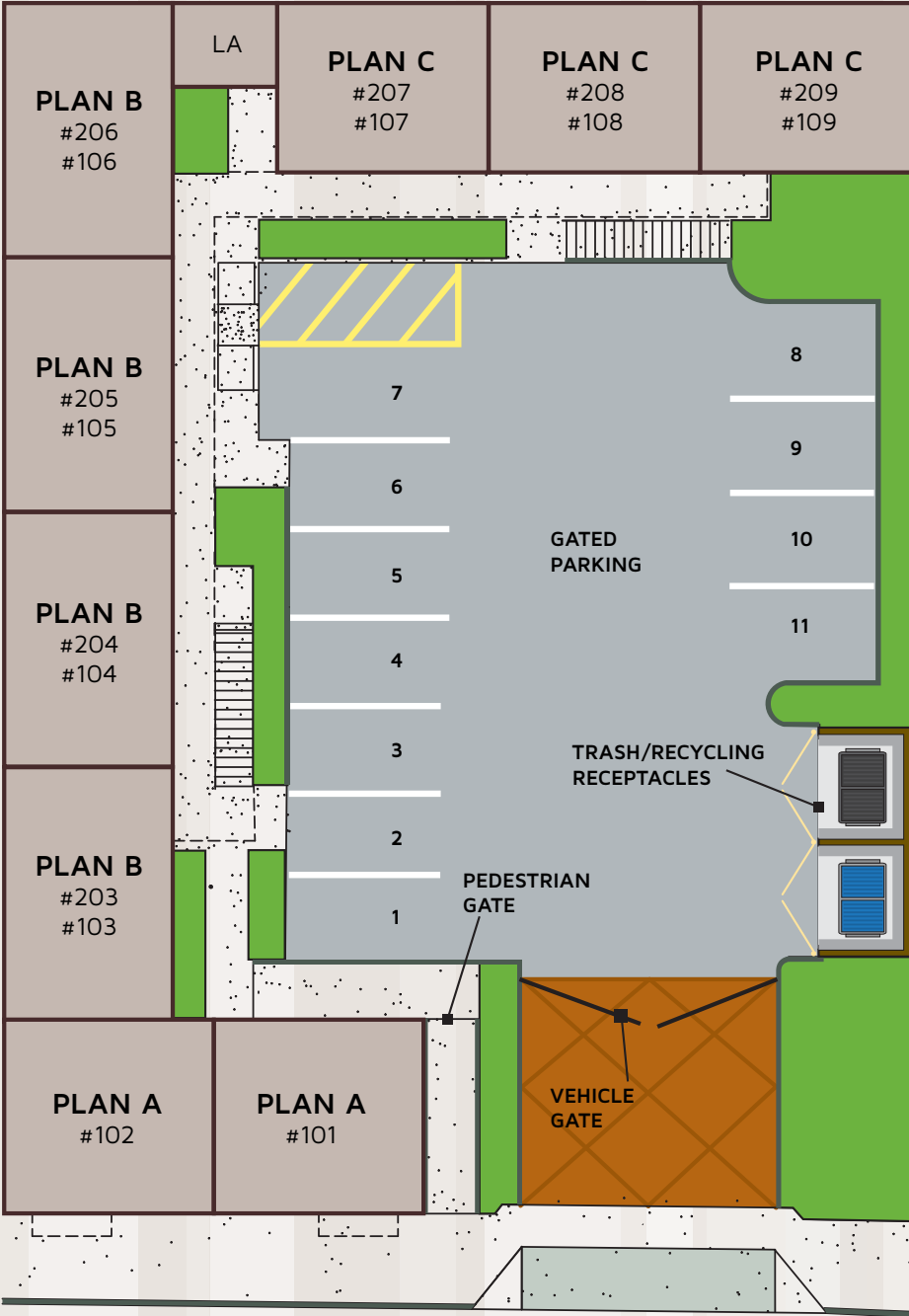
338 Sq. Ft. - #208, #209, #107[◇], #108, #109

378 Sq. Ft. - #207*[◇]

*LARGER UNITS, [◇]NO CLOSET

For more information contact:

Danielle Falaschi at 559.486.3000 or at dfalaschi@gvhomes.com



PROPOSED SITE PLAN

1102 Divisadero Street

For more information contact:

Danielle Falaschi at 559.486.3000 or at dfalaschi@gvhomes.com

CONVENIENTLY LOCATED IN DOWNTOWN FRESNO
1102 DIVISADERO STREET, FRESNO, CA 93721



- | | | |
|--|-------------------------|--------------------------|
| A 330 N. Van Ness Cottages | B Studio 64 | C Iron Bird Lofts |
| D Courtyard Studios | E H Street Lofts | F Vagabond Lofts |
| G Fulton Village | H Biz-Werx | I Broadway Lofts |
| J M Street Arts Complex | K 1612 Fulton | L Bungalow Court |
| M Van Ness Flats | N The Lede | O Crichton Place |
| P 1743 at Crichton & 1752 at Crichton | | |

- | | | |
|------------------|---------------------------|--------------------------|
| Mural District | Comm. Reg. Medical Center | Fresno Convention Center |
| Fresno City Hall | Government Offices | Chukchansi Park |
| Fulton Mall | Community Park | |

NEARBY GROCERY STORES - PARTIAL LIST

(A) Kern St. Farmers Market (B) Food Maxx Grocery Store (C) Grocery Outlet

NEARBY RESTAURANTS - PARTIAL LIST

(A) Basque Hotel (B) Club One Restaurant (C) Rio Acai Bowls (D) Frosty Queen Burgers (E) Mabel's Kitchen
 (F) El Torito Mexican Grill (G) Kikku Japanese Food (H) Yogurt Etc. (I) Take 3 (J) Umi Sushi (K) Joe's Steakhouse
 (L) Raizana Tea (M) Cornerstone Coffee Company (N) Starbucks (O) Shepherds Inn (P) Tokyo Gardens
 (Q) Toledito's Mexican Restaurant (R) Kocky's Bar & Grill

NEARBY SPORTS AND ENTERTAINMENT

(A) Chukchansi Park (Fresno Grizzlies Baseball & Fresno Fuego Soccer) (B) Crest International Theater (C) Rainbow Ballroom
 (D) Selland Arena (Fresno Monsters Hockey & Coyotes Arena Football) (E) Club One Casino (F) Ernest Valdez Hall
 (G) Veterans Memorial Auditorium (H) Warnors Theater of Performing Arts (I) Wm. Saroyan Theater (J) Fulton 55

NEARBY MUSEUMS

(A) African American Mus. (B) Arte Americas (C) Fresno Fire Department Mus. (D) Legion of Valor Mus. (E) Meux Home

COURTYARD
STUDIOS

RentGranville.com
 (559) 486-3000
dfalaschi@gvhomes.com

Leasing Office
 1901 Fulton St.
 Fresno, CA 93721

